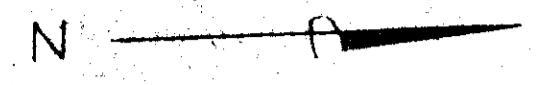
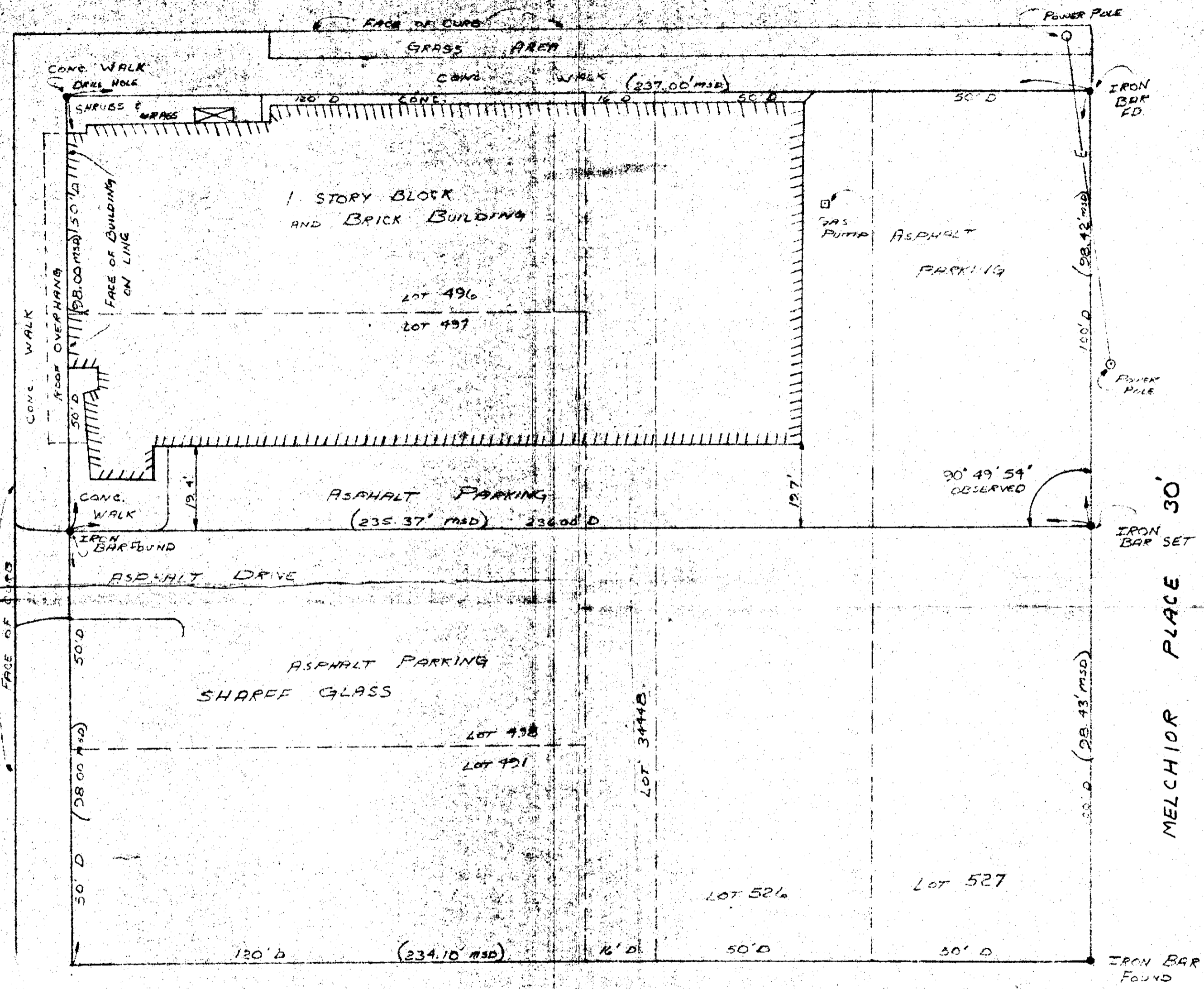


CLEVELAND AVENUE SW 80'



9<sup>TH</sup> STREET SW 60'



IRON BAR SET

MELCHIOR PLACE 30'

IRON BAR FOUND

I HEREBY CERTIFY THAT THIS IS A TRUE AND CORRECT COPY OF SURVEY MADE BY ME THIS 22<sup>ND</sup> DAY OF DECEMBER 1977, AS SURVEYED BY FRIEDL AND HARRIS INC. ENGINEERS AND SURVEYORS OF NORTH CANTON OHIO

*Charles K. Barto*  
 PROFESSIONAL SURVEYOR  
 #6280

MSD = MEASURED  
 D = DEED

MAP OF SURVEY AND LOCATION BEING ALL OF LOTS 496, 497 AND THE WEST HALF OF LOTS 526, 527 AND 30448, IN THE CITY OF CANTON, STARK COUNTY, OHIO

SCALE: 1" = 20' DATE: December 21, 1977  
 FRIEDL & HARRIS, INC.  
 ENGINEERS & SURVEYORS  
 4041 BAYTON ST. N.W.  
 NORTH CANTON, OHIO 44726  
 PHONE: CANTON 499-8616

DRAWN BY: E.H.D. BY: J.P.B.  
 CHECKED BY: J.P.B.  
 DRAWING NO.: