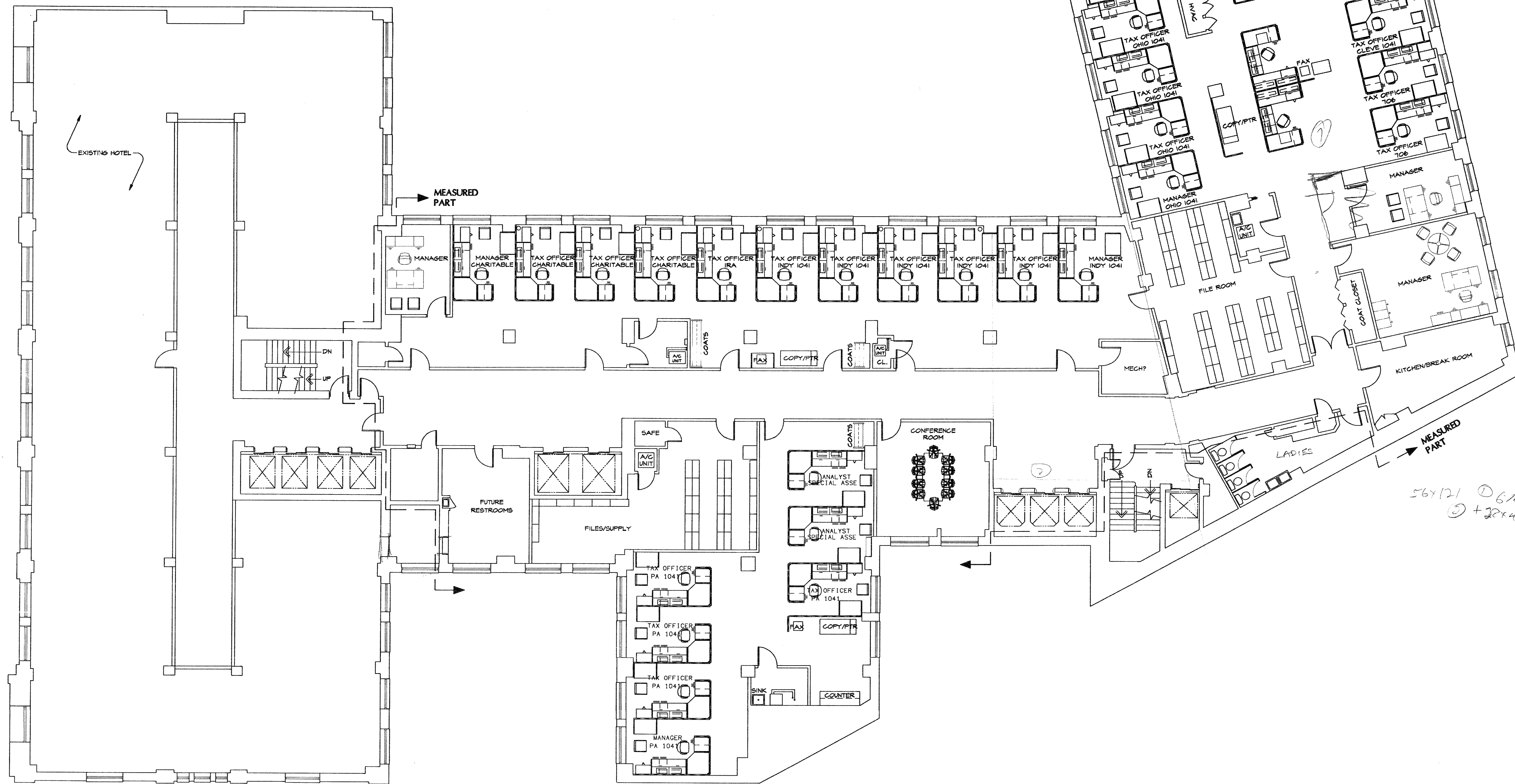


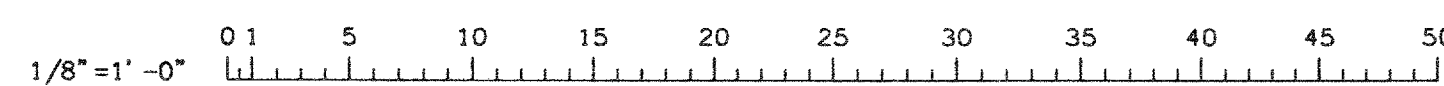
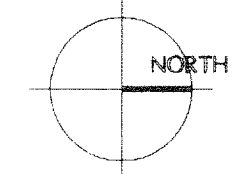
EUCLID AVENUE

VINCENT AVENUE



567121 @ 6165
@ + 387443 = 0.70
/ TRS

FLOOR PLAN
SCALE: 1/8" = 1'-0"



PARTIALLY MEASURED REFERENCE DRAWING: SAVE AS A RECORD OF EXISTING CONDITIONS

OFFICE AREA OF DRAWING BASED
ON FIELD MEASUREMENTS BY HWH AEP INC.
OCTOBER 9, 2003

REVIEW 05-12-04
ISSUED FOR:

PROJECT TITLE:

National City

NATIONAL CITY BANK
629 EUCLID AVENUE
CLEVELAND, OHIO

DRAWING TITLE:

NCB BUILDING
8TH FLOOR
ALTERNATE STUDY
PCG TRUST TAX SERVICES

JOB NUMBER: A4-077 DRAWING NUMBER:
SAVE NAME: A4077J01
DRAWN BY: KH
CHECKED BY: BMC

051204 KH FHM-E 8NCB-P2